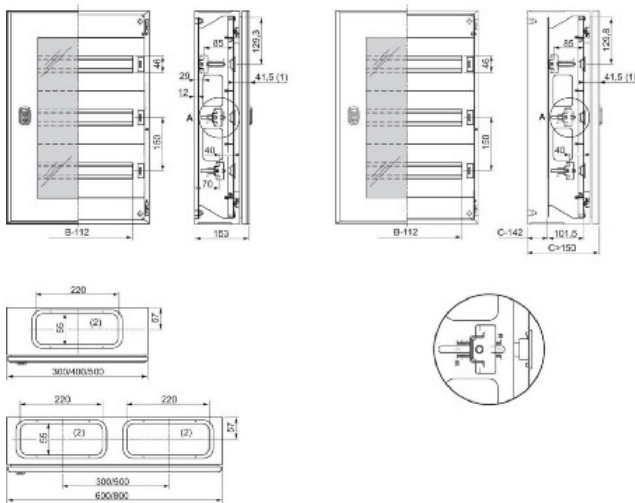


<https://www.eibabo.in/schneider-electric/machine-cover-3-row.24md-400x300-panel-for-distribution-board-453x355mm-nsydlm48-eb16004406>



**Machine cover 3-row.24Md 400x300 - Panel for distribution board 453x355mm NSYDLM48**

**Schneider Electric**  
NSYDLM48  
3606480162527 EAN/GTIN

**5959,01 INR** excl. VAT\*\*  
plus shipping



16-17 days\* (IND)

Machine cover 3-row.24M4 400x300 NSYDLM48 height 453mm, width 355mm, depth 101.5mm, number of DIN rails 3, number of pitch units per DIN rail 16, type of cover with cutout, with N-PE terminals, with cover , Modular housing type DLM for SPACIAL WM housing. H:500 x W:400mm, 48 (18mm) modules. Versatile, modular manifold application. Step carriage, front of housing assembly. Height adjustment from 40 to 85 mm for DIN rail. steel made. Gray RAL 7035. 2 covers, 1 neutral/earth strip 2 x 16 mm<sup>2</sup> 5 x 6 mm<sup>2</sup>, 3 front panels (35 mm DIN rail).

## YOUR ADVANTAGES



## WORLDWIDE TRADE

Corporate video eibmarkt®



## COMPLAINTS HANDLING

*Obliging and 100% safely*



### SHORT DELIVERY TIME

## Warehousing



## 99% CUSTOMER SATISFACTION

> 500,000 customers worldwide



## 25 YEARS OF EXPERIENCE

*In worldwide mail order*



## REFUND

**Within 14 days**



## DHL TRACK & TRACE

### Shipment tracking



## ORDER LIVE CHAT

*With order history*



## DATA PROTECTION

### Guarantee

© 1997-2024 eibmarkt.com GmbH - Kemmlerstrasse 1 - 08527 Plauen - Germany

**eibabo®** and **eibmarkt®** are registered trademarks of EIBMARKT® GmbH holding company ([www.eibmarkt.de](http://www.eibmarkt.de)). eibabo® is a company of eibmarkt.com GmbH.  
eibmarkt.com GmbH is a 100% subsidiary of EIBMARKT® GmbH holding.

\* Note on delivery time: Day = Monday to Friday, no public holiday in Bavaria or Saxony. Goods are also delivered on Saturdays (DHL).

\*\* Payment methods may vary from country to country. All prices plus shipping and excluding customs duties or other additional costs (import sales tax) for deliveries outside the EU.

\*\*\* Savings compared to RRP = the manufacturer's recommended retail price. RRP is the price recommended to retailers by the manufacturer, importer or wholesaler as a resale price to the customer. The RRP is also referred to as the list price and is defined as the highest possible price that a buyer would pay for a specific product before any discounts (Source of gross list prices: Germany).

**eibabo®** the Smart Home technology shop  
**eibabo®** electronics cheap online order  
**eibabo®** electric appliances buy online

